

STEP 1

User presses traditional Phone button.

next

home

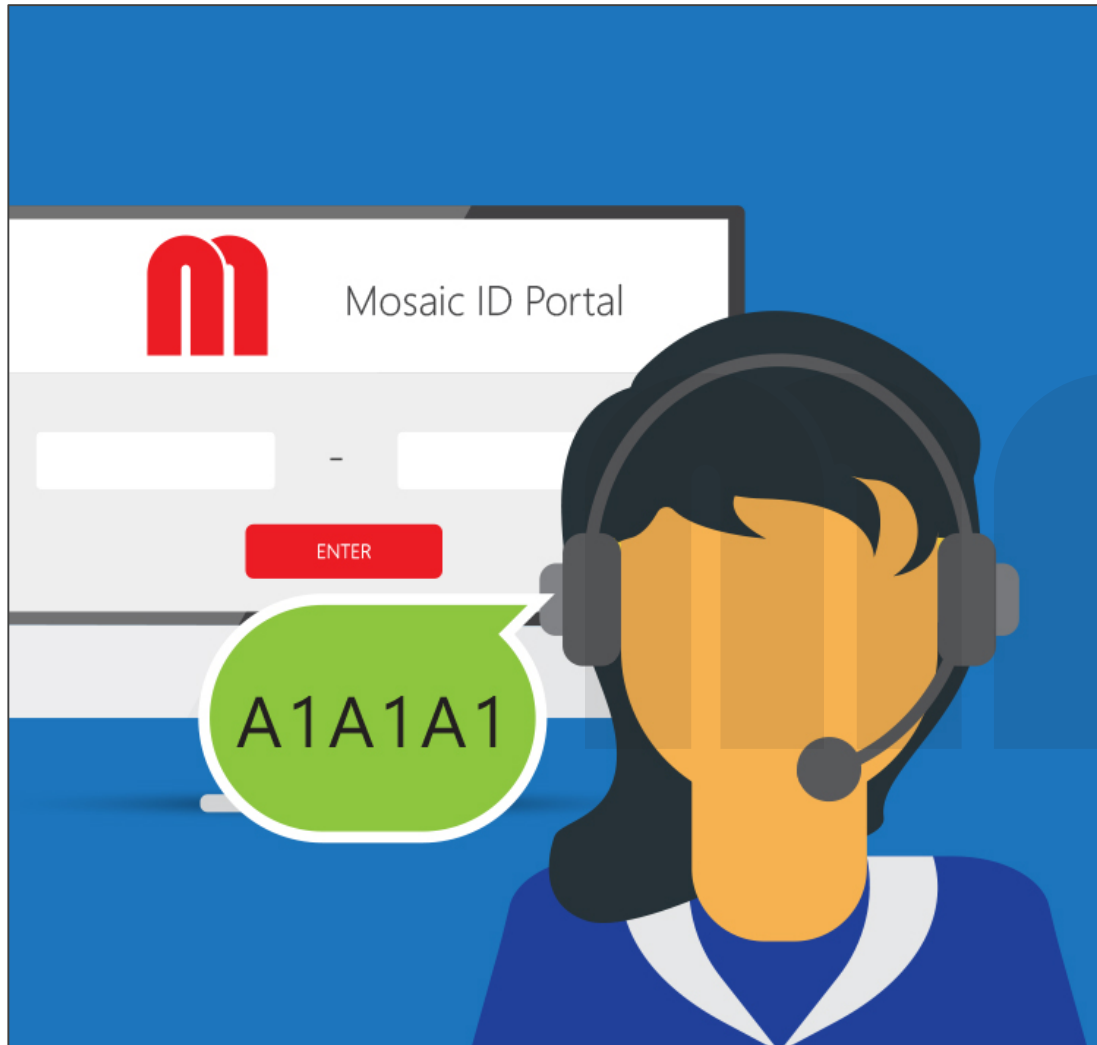


STEP 2

Autodialer activated sending audio call as normal.

next

home



STEP 3

Upon connection with monitoring station, phone dictates address and Mosaic ID.

Option for monitoring station software integration.

next

home



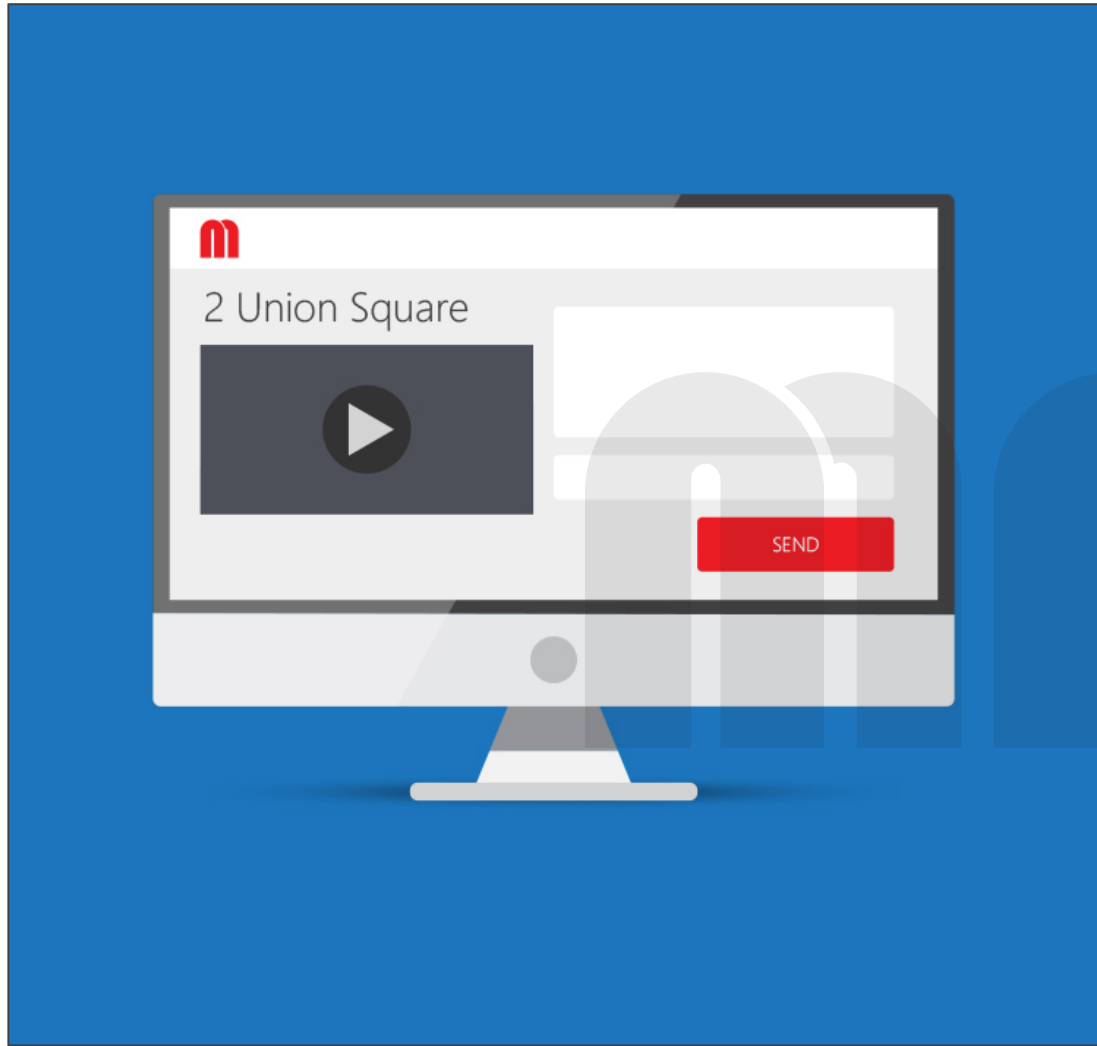
STEP 4

Monitoring station enters Mosaic ID into portal.

Not applicable with monitoring station software integration.

next

home



STEP 5

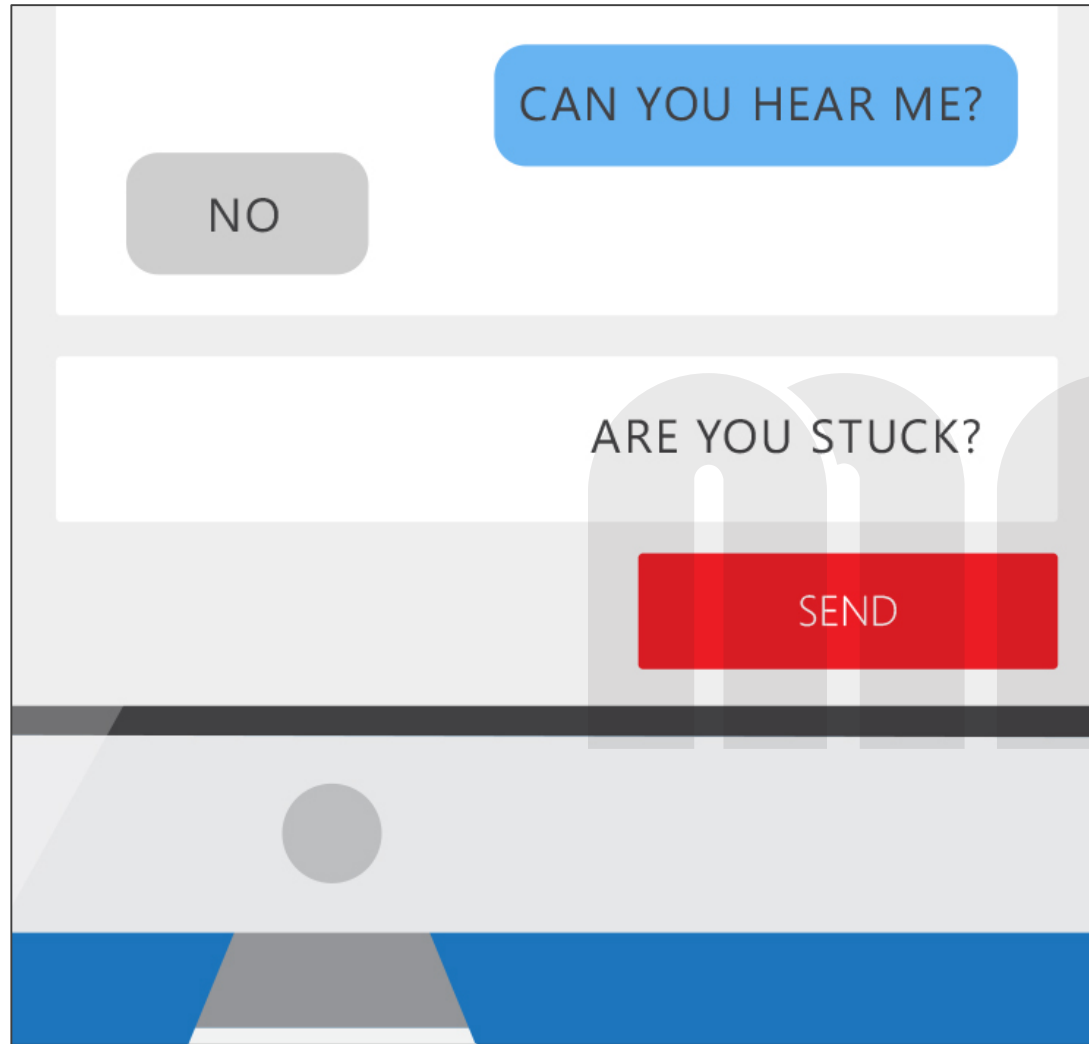
Upon entering of ID, live video of cab is displayed.

or

Automatically if integrated with monitoring station.

next

home



STEP 6

Monitoring agent can enter text into box, or select pre-written text, which is displayed on the device.

next

home



STEP 7

Message from monitoring station is displayed on the Matisse Position Indicator.

next

home



PHASE 2

(not required by code)

The live video feed from the monitoring station guard is visible to elevator occupant on the Matisse Position Indicator or TTG Touchscreen.

back

home