



Kraus & Naimer
BLUE LINE switchgear

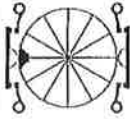
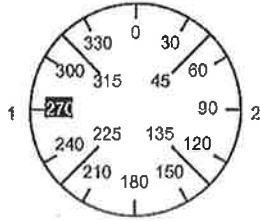
WAS CD2608

CA4

CD2645

Page 1 of 1

Face Plate



1 3 5 7 9 11 13 15 17 19 21 23

Switching Angle 90
Total switching Angle 180

2 4 6 8 10 12 14 16 18 20 22 24

1	270	█													
	285														
	300														
	315														
	330														
	345														
	0														
	15														
	30														
	45														
	60														
	75														
2	90	█													
	105														
	120														
	135														
	150														
	165														
	180														
	195														
	210														
	225														
	240														
	255														

Look	000	Pcs.	Optional Extras	Jumpers			
Mounting	E	1	S00 L802	10	03	40	02
Face Plate	---			50	07	80	06
Handle				90	011	120	010
Latch. Mech.	E102			130	015	160	014
Stop	S00.E101.17			170	019	200	018
Stop degree				210	023	240	022
No. of Stages	1			250	027	280	026
Master data	1			290	031	320	030
Reference	GPG			330	035	360	034
Date	1997-05-09 15:26			370	039	400	038
Modify Date				410	043	440	042
Cust. NO.				450	047	480	046
Company	MAINLINE						
Version	2						